

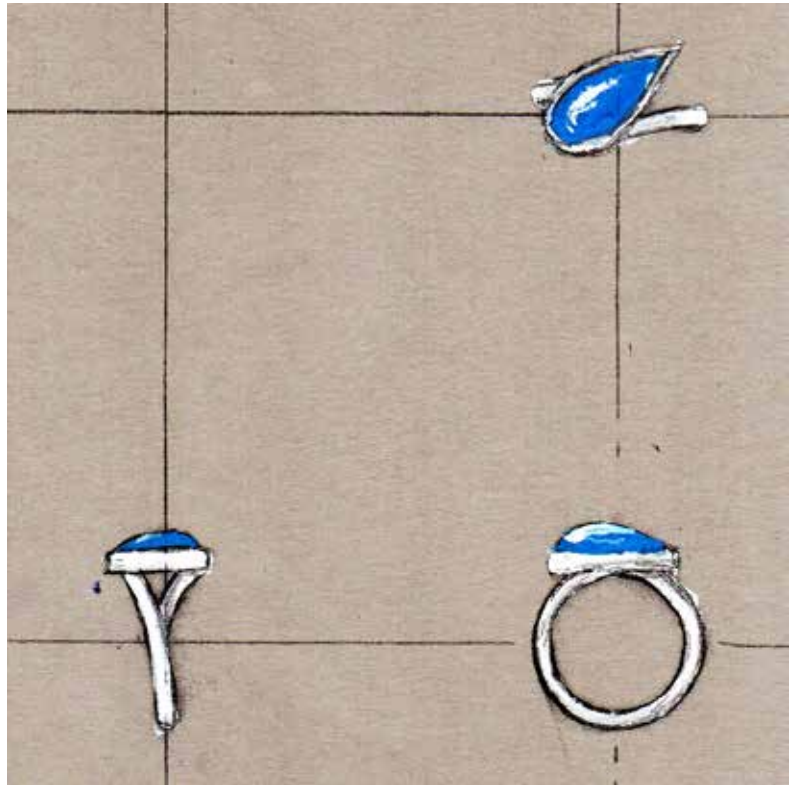
DESIGN;- RENDERING

Rendering really just means colouring in, or creating a painted or coloured detail drawing, created to give a realistic looking drawing.

The idea is to make a basic drawing come alive, either as a record of a design, or, most often, to provide to a client if you are creating a custom design for them, so that the client can get a real idea of the design and make an informed decision whether to go ahead.

WHY DO RENDERING

The idea is to make a basic drawing come alive, either as a record of a design, or to provide to a client if you are creating a custom design for them, so that the client can get a real idea of the design and make an informed decision whether to go ahead.



Rendering can also become part of your design process if you choose - you can use rendered drawings to help you make design choices and decisions - sometimes it can help to fully draw out your piece completely...

SUPPLIES

Most rendering is traditionally done on a mid grey coloured paper. This creates a great base and contrast for all different colours of metals and gems.

Generally you are looking for a relatively strong paper, not too thin. If you are going to be using paints or coloured pencils with water, then you need a paper that will withstand wet mediums. If you are just using coloured pencils dry, then this is less vital.

- A4 sized mid grey toned paper
- Tracing paper (useful to transfer your drawing)
- Sharp HB or 2H pencil (or a technical drawing / mechanical pencil with a fine lead)
- Standard set of coloured pencils (a larger set with more colours / shades will allow a more detailed rendering)
- Optional - gouache paints / fine paintbrush / palette / water container
- Useful, but not essential to have; - drawing board and masking tape, to stretch out your paper if you are going to use a lot of water in your painting.

COLOUR

Traditionally, gouache paints have been used to create renderings. These are easily accessible and require a little practicing to get used to, but are relatively straightforward. They are dense paints that create a solid colour, can be blended easily to create a wide

range of colours, create a dense opaque colour, but can be thinned out with water if needed.

To work with paints, make sure you have a paintbrush with a very clear, fine point, water, and tissue paper, and your paper is sturdy enough that it won't buckle when painted on.

Alternatively - a possibly more accessible option is to use coloured pencils. Available everywhere - you can use basic kids pencils from a local store, or invest in some higher grade pencils from an art store - in an art store you can also choose individual colours, so it might be easier to get a good range of shades in your most used colours (for silver and gold, you'll need yellows and greys primarily, as well as a good white and dark shade. You can blend colours with pencils, but if you have a larger range of shades available, it will give you more possibilities for colour.

LIGHT

The key to a realistic rendering is applying your light and shade appropriately - this brings a flat drawing to life.

To do this - you need to imagine in your head a light source coming from one specific direction shining on your piece, and keep that direction the same.

It can help to have a real item of jewellery in front of you, and shine a desk lamp on it, to see how the light affects it - which bits are hit by the light and which are in shade.

MOUNTING

To fully present your work - it should be mounted.

Using mount board that is larger than your drawing, you can cut a window into the mount board to fit your drawing. Choose a colour of board that suits your drawing.

For best effect, but this opening using an angled blade on a craft knife and a steel fuler for precision.

You can add a further layer of mount to frame your work if you choose.

A sheet of clear acetate can be stuck between the mount board and your rendering to protect it from dust or damage, and then either use a sheet of paper as a backing, or put the whole thing into a frame to present it.

Of course this is not always done - you can present your drawings however you choose to!

