

TECHNIQUE; - OFF LOOM BEADWORK

Beadwork, also referred to as Stitched Beadwork, off Loom Bead Weaving or Bead Needle Weaving is great for anyone with an eye for detail and a fair amount of patience. These terms all refer to using a needle and thread to stitch beads to each other to create a flat or 3D form - without using any backing or loom, and this is what I primarily focus on when it comes to working with beads.

Using just tiny glass seed beads, a needle, and thread you can create a wide variety of gorgeous jewellery and objects, and working without a backing can give a different freedom in terms of design, than embroidery or loom work.

There are a number of basic stitches that can be used, combined and embellished in different ways to make an endless array of original designs. The most commonly used key stitches are: - Netting, Peyote Stitch, Brick Stitch, Square Stitch, Herringbone Stitch and Right Angle Weave, as well as simple ropes such as Dutch Spiral, Spiral Staircase, St Petersburg Chain.

Designs can also be created stitching beads together that do not use any specific stitches, to create patterns.

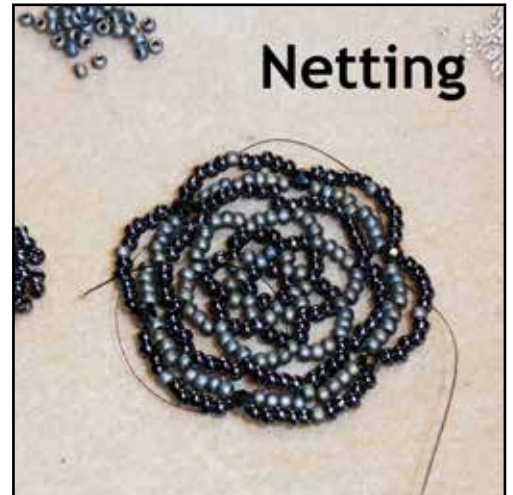
Some great beginners projects to get used to working with beadwork might be; - a 3 strand bracelet using a mix of simple rope stitches, a striped peyote stitch bracelet, or creating a simple bezelled crystal...

NETTING

As you could imagine - this creates an open, net-like form, that can be made straight and flat, as ropes, or used to create endless variations of necklaces, as well as coasters, and table mats, or decorative covers for vases, baubles, tea light holders and all sorts of items - the natural stretch of netting allows it to fit well around different 3D shapes.

RIGHT ANGLE WEAVE

In this stitch each bead, or group of beads sits at right angles to the next, creating little box shaped stitches that build together into a longer or wider strip. This can also be done in 3D - cubic right angle weave.



SQUARE STITCH

Square stitch creates a flat, regular piece of beadwork - very similar to Loom woven work - the beads line up in a regular grid pattern and this looks great using cylinder beads for a super flat, even surface.



Peyote Stitch



BRICK STITCH

This gives a solid, flat effect similar to peyote stitch but is made differently, and the beads sit at right angles to the way they would sit if done using peyote stitch.

PEYOTE STITCH

This is a super versatile stitch that is used a lot - to create flat strips of beadwork, as well as to create solid 3D forms - making 'beaded beads' as well as tubes and other forms.

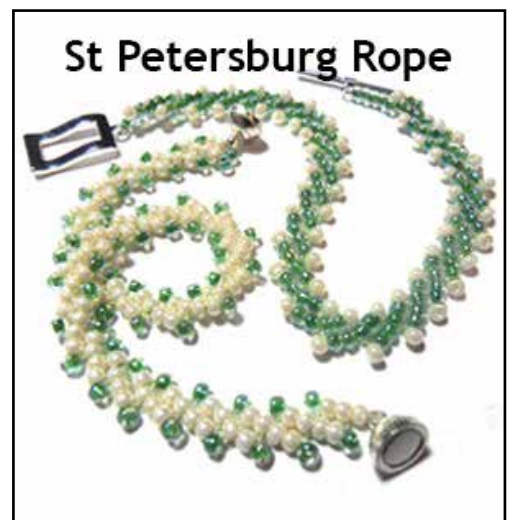


CELLINI

This is a variation of peyote stitch that uses a graduated mix of different sized beads to twist, or add 3D form to a normally flat piece of beadwork.

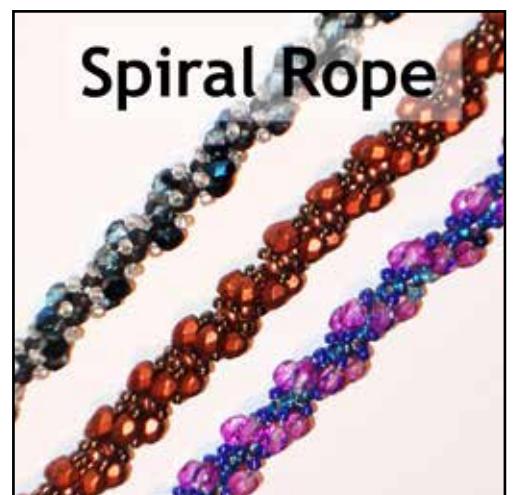
DAISY CHAIN

A lovely simple rope pattern - creating flower shapes, in a row, that I find great for beginners using firepolish crystals or pearl type beads to make great ropes for bracelets or necklaces, but can be adapted and embellished for more complex designs.



ST PETERSBURG CHAIN / ROPE

This is a rope type pattern that works in strips, each unit offset on the other to create slanting rows of beads - multiple rows can be build together to create wider strips, and changing the bead size or type can make some fabulous variations.



SPIRAL STAIRCASE / SPIRAL ROPE

One of the most popular stitches to create ropes for bracelets and necklaces - it creates a core pf beads with loops of other beads spiralling around it. Can also be used to create fringes and tassels.